

POSTLE INDUSTRIES, INC.



P.O. Box 42037 • Cleveland, Ohio 44142
Fax: 216-265-9030 • Phone: 216-265-9000 • Toll Free: 800-321-2978
E-Mail: sparky@postle.com • Web Site: www.postle.com

Data Sheet

POSTALLOY® PS 10

Description

POSTALLOY PS-10 is a tungsten carbide, nickel base hardfacing wire designed to resist severe abrasion but unlike traditional tungsten carbide wires, it absorbs more impact without fracturing. Because of the unique chemistry, Tungsten-Carbide-Nickel-Chromium-Silicon-Boron, it also has excellent resistance to erosive wear, frictional wear, corrosive wear, and maintains its hardness, even at temperatures of 1100°F (565°C). Weld deposits contain over 50% fully fused, pre-alloyed carbides.

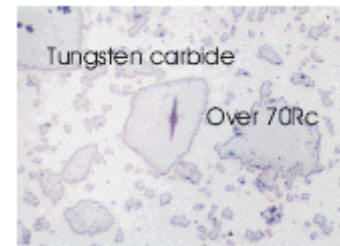
The alloying elements in this wire produce a high hardness alloy that encapsulates and protects the carbide particles, reducing premature wear caused by erosion next to the carbide particles. **Postalloy PS-10** has very good weldability and a very soft arc, this, in combination with the nickel matrix, reduces weld dilution and carbide dilution to produce a truly outstanding multi-wear wire.

Specifications:

Wire type: Metal-Cored, Gas-Shielded, Slag Free

Weld deposit properties

Average Hardness
Matrix - 51 Rc
Tungsten carbide - 2400 HV (70 Rc+)
Deposit Thickness - 2 layers maximum
Weld Deposits Cannot be Flame Cut
Weld Deposits Check Crack



Applications

Processing Equipment - mixer blades - feed screws
Oil and Gas Drilling Down Hole Tools - stabilizers
Dredging Equipment - cutter heads, shredding, hammers
Wear Rings

Welding Parameters DC Reverse

Preferred Shielding Gas:	75/25 Argon/CO2 @ 35 CFH	Optimum
Alternate Shielding Gas:	90/10 CO2	
Amperage	120-180	160 amp
Voltage	19-23	20 volts
Stick-out	3/4"	

Packaging

1/16 on 25 lb spools
3/32 on 55 lb coils